



ASCEND Fiber Housings in Rack

Features

- High Density: 1RU/144F, 2RU/288F and 4RU/576F
- Designed for 19" rack. Optional 23" rack mount kit available.
- Galvannealed steel construction
- Hinged front and rear doors and removable back cover
- BASE-8, BASE-12 and BASE-24 compatibility
- Interchangeable cassette options for multiple applications
- Cassettes install independently from front or rear of housing
- Trunk cable management area accommodates ASCEND Trunk Cable Assemblies equipped with integrated cable mounting clip
- Compatible with all ASCEND Cassettes

Applications

- Data Centers
- Central Offices
- Headends
- Structured Cabling Networks
- Wavelength Division Multiplexing (WDM)

ASCEND® Fiber Housings

ASCEND fiber housings are available in 1RU, 2RU and 4RU sizes with densities of up to 144, 288, and 576 fibers for LC connections, respectively. Designed to support incremental growth or a full-scale deployment, ASCEND housings provide the ultimate in ease-of-use and fiber management features.

ASCEND housings are 19" or 23" (separate kit) rack-mountable and constructed using galvannealed steel for an extended service life. The front and rear doors are both hinged on the bottom, while the rear section of the housing cover is removable on the 1RU and 2RU for unobstructed access to all connector interfaces. The 4RU Housing features a fixed top equipped with lance positions to accommodate additional trunk cable assemblies, enabling both bottom and top cable entry and flexible routing options. Integrated routing rings at the front of the trays enable secure and organized routing of patch cords which facilitates efficient Moves, Adds and Changes (MACs).

The rear of the housing incorporates a trunk cable management area which features multiple trunk cable outback clip mounting positions that are designed to securely manage slack while allowing the trays to slide in/out for installation and service.

NOTE: A separate external cable mounting bracket is required if non-ASCEND cable assemblies are going to be installed in ASCEND Fiber Housings.

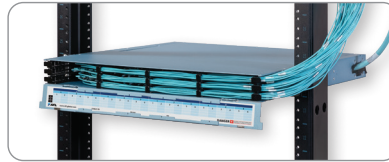
Ordering Information

PANEL TYPE	DESCRIPTION	AFL NO.
BASE-8	ASCEND HOUSING, 1RU, BASE-8 TRAYS	ASCEND-1RU-8-RT
	ASCEND HOUSING, 2RU, BASE-8 TRAYS	ASCEND-2RU-8-RT
	ASCEND HOUSING, 4RU, BASE-8 TRAYS	ASCEND-4RU-8-RT
BASE-12	ASCEND HOUSING, 1RU, BASE-12 TRAYS	ASCEND-1RU-12-RT
	ASCEND HOUSING, 2RU, BASE-12 TRAYS	ASCEND-2RU-12-RT
	ASCEND HOUSING, 4RU, BASE-12 TRAYS	ASCEND-4RU-12-RT
BASE-24	ASCEND HOUSING, 1RU, BASE-24 TRAYS	ASCEND-1RU-24-RT
	ASCEND HOUSING, 2RU, BASE-24 TRAYS	ASCEND-2RU-24-RT
	ASCEND HOUSING, 4RU, BASE-24 TRAYS	ASCEND-4RU-24-RT

ASCEND® Fiber Housings



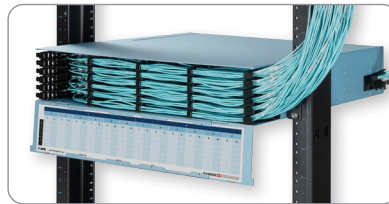
ASCEND 1RU



ASCEND 1RU front



ASCEND 2RU



ASCEND 2RU front



ASCEND 4RU



ASCEND 4RU front

Specifications

PARAMETER	MODEL		
	ASCEND 1RU	ASCEND 2RU	ASCEND 4RU
Rack Space	1 RU	2 RU	4 RU
Fiber Density (BASE-12, BASE-24)	144 (LC), 864 (MPO)	288 (LC), 1,728 (MPO)	576 (LC), 3,456 (MPO)
Fiber Density (BASE-8)	144 (LC), 576 (MPO)	288 (LC), 1,152 (MPO)	576 (LC), 2,304 (MPO)
Number of Trays	3	6	12
Cassette Capacity	18 x BASE-8 Cassettes (6 per tray) 12 x BASE-12 Cassettes (4 per tray) 6 x BASE-24 Cassettes (2 per tray)	36 x BASE-8 Cassettes (6 per tray) 24 x BASE-12 Cassettes (4 per tray) 12 x BASE-24 Cassettes (2 per tray)	72 x BASE-8 Cassettes (6 per tray) 48 x BASE-12 Cassettes (4 per tray) 24 x BASE-24 Cassettes (2 per tray)
Dimensions (HxWxD)	44.5 x 438.2 x 501.6 mm 1.75 x 17.25 x 19.75 in.	88.9 x 438.2 x 501.6 mm 3.5 x 17.25 x 19.75 in.	177.8 x 438.2 x 501.6 mm 7.0 x 17.25 x 19.75 in.
Weight	7.5 kg 16.6 lb.	10.2 kg 22.4 lb.	15.7 kg 34.6 lb.
Color	Blue	Blue	Blue
Material	Metal Components: 16 GA Galvannealed Sheet Steel per ASTM A653	Metal Components: 16 GA Galvannealed Sheet Steel per ASTM A653	Metal Components: 16 GA Galvannealed Sheet Steel per ASTM A653

Qualifications

GOVERNING BODY	STANDARD CODE
RoHS	Compliant